

## **FUNCTION IN FIRE EXPERT JUDGEMENT REPORT WITH CLASSIFICATION FIRES-JR-084-16-NURE**

---

**Cable bearing system VERGOKAN with cables PRYSMIAN and PRAKAB**

This is an electronic version of a classification report which was made as a copy of classification report officially issued in a paper form. The electronic version of a classification report shall be used only for informative purpose. Any information listed in this classification report is the property of the sponsor and shall not be used or published without written permission. Contents of this file may only be modified by the editor i.e. FIRES, s.r.o., Batizovce. Sponsor is allowed to publish this classification report in parts only with written permission of the editor.

# FUNCTION IN FIRE EXPERT JUDGEMENT REPORT WITH CLASSIFICATION IN ACCORDANCE WITH ČSN 73 0895

**FIRES-JR-084-16-NURE**

**Name of the product:** Cable bearing system VERGOKAN with cables PRYSMIAN and PRAKAB

**Sponsor:** VERGOKAN  
Meersbloem Melden 16  
9700 Oudenaarde  
Belgium

**Prepared by:** FIRES, s.r.o.  
Approved Body No. SK01  
Osloboditeľov 282  
059 35 Batizovce  
Slovak Republic

**Task No.:** PR-16-0102

**Date of issue:** 14. 06. 2016

Reports: 3  
Copy No.: 2

**Distribution list:**

Copy No. 1	FIRES, s. r. o., Osloboditeľov 282, 059 35 Batizovce, Slovak Republic (electronic version)
Copy No. 2	VERGOKAN, Meersbloem Melden 16, 9700 Oudenaarde, Belgium (electronic version)
Copy No. 3	VERGOKAN, Meersbloem Melden 16, 9700 Oudenaarde, Belgium

This expert judgement report consists of 8 pages and 13 annexes and may only be used or reproduced in its entirety.



## 1. INTRODUCTION

This expert judgement report with classification defines the function in fire classification assigned to element „Cable bearing system VERGOKAN with cables PRYSMIAN and PRAKAB” in accordance with the classes given in ČSN 73 0895.

This expert judgement report defines field of application which is outside the field of direct application according test standard or outside the field of extended application according to relevant extended application standard. This expert judgement expresses the opinion of the FIRES and is based on the experience or internal rules of FIRES.

This products have already been classified by FIRES, s.r.o. and number of previous fire resistance expert judgement report with classification is FIRES-JR-038-11-NURE Issue 2, issued on 14. 12. 2011 with validity until 06. 07. 2016. Document FIRES-JR-084-16-NURE replaces expert judgement report with classification FIRES-JR-038-11-NURE Issue 2.

## 2. DETAILS OF CLASSIFIED PRODUCT

### 2.1 GENERAL

The element, Cable bearing system VERGOKAN with cables PRYSMIAN and PRAKAB, is defined as a cable bearing system for power and communication halogen free cables with circuit integrity maintenance in fire.

### 2.2 PRODUCT DESCRIPTION

The element comprise of cable bearing system VERGOKAN – cable trays with accessories (consoles, brackets, screws etc.) with power and communication halogen free cables PRYSMIAN and PRAKAB with circuit integrity maintenance in fire.

#### **Cable trays KBSI**

Cable trays are made of steel sheet 1,0 mm thick. Height of side wall is 60 mm. Width of tray is 400 mm. The trays are perforated on the sides and on the bottom. Cable tray is equipped with integrated junction. Trays are jointed together with 5 pcs of screws VMK 6x10 (new trademark is VMK6.10). Maximum load of trays is 20 kg.m<sup>-1</sup>. Tested trays were KBSI 60x400x1,00 (new trademark is KBSI60.400.100).

#### **Brackets WKM**

Brackets are made of steel sheet 2,5 mm thick. Dimensions of the base steel sheet is (70x175) mm and 8,0 mm thick and is equipped by holes for installation. Holes for installation of trays are in upper part of the brackets.

Tested brackets were WKM 400 (new trademark is HDWKM400).

#### **Consoles HSMU**

Consoles are made from steel sheet and are composed of a head plate and the U 50 profile. Dimensions of the base head is (123x123) mm and 4,0 mm thick or (135x135) mm and 5,0 mm thick and is equipped by holes for installation. Dimensions of the U profile is (50x50) mm and 2,5 mm thick and is equipped by holes for installation of brackets. Tested consoles were HSMU 50x1000 (new trademark is HDHSMU50.1000).

#### **SPACER TSU50 and HDTSU50**

Spacers are made of steel sheet 1,0 mm thick (TSU50) or 1,5 mm thick (HDTSU50).

#### **Cables**

Power and communication free halogen cables are specified for stationary distribution of electrical energy in dry and damp premises. Since they are free from halogens and exhibit enhanced fire performance, these cables are used in those applications where in the event of fire, the negative effect on concentrations of people and valuable material goods must be minimized. Suitable for hotels, hospitals, underground railways, airport etc. to protect people and technical building equipment in the event of fire where there is requirement for maintaining the functional integrity all cable installation in the event of fire. The cables develop in case of fire low heat released rate and smoke and no burning particles drop away



during fire accident. Functional integrity all cable installation in the event of fire is guaranteed only with use specified supporting member and cables grips.

#### Used cables by test:

PRYSMIAN cables (producer Prysmian, Viale Sarca 222, IT-20126 Milano, Italy)

- cable (N)HXH-J E30 4x50 RM (2x);
- cable (N)HXH-J E30 4x1,5 RE (2x);
- cable (N)HXCH E30 4x50 RM/25 (2x);
- cable (N)HXCH E30 4x1,5 RE/1,5 (2x);
- cable (N)HXHX-J E90 4x50 RM (2x);
- cable (N)HXHX-J E90 4x1,5 RE (2x);
- cable (N)HXCHX E90 4x50 RM/25 (2x);
- cable (N)HXCHX E90 4x2,5 RE/2,5 (2x);
- cable JE-H(St)H E30 2x2x0,8 (2x).

PRAKAB cables (producer PRAKAB PRAŽSKÁ KABELOVNA, s.r.o., Ke Kablu 278, 102 09 Praha 15, Czech Republic)

- cable (N)HXH FE180 E90 4x50 RM (2x);
- cable (N)HXH FE180 E90 4x1,5 RE (2x);
- cable (N)HXCH FE180 E30 4x50 RM/25 (2x);
- cable (N)HXCH FE180 E30 4x1,5 RE/1,5 (2x);
- cable (N)HXH FE180 E30 4x50 RM (2x);
- cable (N)HXH FE180 E30 4x1,5 RE (2x);
- cable (N)HXCH FE180 E90 4x50 RM/25 (2x);
- cable (N)HXCH FE180 E90 4x1,5 RE/1,5 (2x);
- cable JE-H(St)H FE180 E90 2x2x0,8 (2x).

The length of supporting constructions and cables was 5,5 m, 4 m from that was exposed to fire. Power and communication cables were fixed to the steel sheet trays in the points of allowed bending radius by steel clamps according to the cable diameter.

More detailed information about product construction is shown in the drawings which form an integral part of test report [1]. Drawings were delivered by sponsor.

### 3. TEST REPORTS AND EXTENDED APPLICATION REPORTS IN SUPPORT OF CLASSIFICATION

#### 3.1 TEST REPORTS AND EXTENDED APPLICATION REPORTS

No.	Name of laboratory	Name of sponsors	Test report No.	Date of the test	Test method
[1]	FIRES, s.r.o., Batizovce, SK	VERGOKAN, Meersbloem Melden 16, 9700 Oudenaarde, Belgium	FIRES-FR- 119-11-AUNE	02. 06. 2011	DIN 4102 – 12:1998-11

#### 3.2 TEST RESULTS

Test report No. /Test method	Specimen No.	Cables	Track No.	Time to first failure / interruption of conductor
[1] DIN 4102-12	S1	cable (N)HXH-J E30 4x50 RM - Prysmian	X2-J	91 minutes
	S2	cable (N)HXH-J E30 4x50 RM - Prysmian	X2-J	91 minutes
	S3	cable (N)HXH-J E30 4x1,5 RE - Prysmian	X2-J	31 minutes
	S4	cable (N)HXH-J E30 4x1,5 RE - Prysmian	X2-J	39 minutes
	S5	cable (N)HXCH E30 4x50 RM/25 - Prysmian	X2-K	83 minutes
	S6	cable (N)HXCH E30 4x50 RM/25 - Prysmian	X2-K	93 minutes
	S7	cable (N)HXCH E30 4x1,5 RE/1,5 - Prysmian	X2-K	39 minutes
	S8	cable (N)HXCH E30 4x1,5 RE/1,5 - Prysmian	X2-K	93 minutes no failure / interruption



Test report No. /Test method	Specimen No.	Cables	Track No.	Time to first failure / interruption of conductor
[1] DIN 4102-12	S9	cable (N)HXHX-J E90 4x50 RM - Prysmian	X2-L	93 minutes no failure / interruption
	S10	cable (N)HXHX-J E90 4x50 RM - Prysmian	X2-L	93 minutes no failure / interruption
	S11	cable (N)HXHX-J E90 4x1,5 RE - Prysmian	X2-L	93 minutes no failure / interruption
	S12	cable (N)HXHX-J E90 4x1,5 RE - Prysmian	X2-L	93 minutes no failure / interruption
	S13	cable (N)HXCHX E90 4x50 RM/25 - Prysmian	Y2-M	93 minutes no failure / interruption
	S14	cable (N)HXCHX E90 4x50 RM/25 - Prysmian	Y2-M	93 minutes no failure / interruption
	S15	cable (N)HXCHX E90 4x2,5 RE/2,5 - Prysmian	Y2-M	93 minutes no failure / interruption
	S16	cable (N)HXCHX E90 4x2,5 RE/2,5 - Prysmian	Y2-M	93 minutes no failure / interruption
	S17	cable (N)HXH FE180 E90 4x50 RM - Prakab	Y2-N	93 minutes no failure / interruption
	S18	cable (N)HXH FE180 E90 4x50 RM - Prakab	Y2-N	76 minutes
	S19	cable (N)HXH FE180 E90 4x1,5 RE - Prakab	Y2-N	93 minutes no failure / interruption
	S20	cable (N)HXH FE180 E90 4x1,5 RE - Prakab	Y2-N	93 minutes no failure / interruption
	S21	cable (N)HXCH FE180 E30 4x50 RM/25 - Prakab	Z2-O	79 minutes
	S22	cable (N)HXCH FE180 E30 4x50 RM/25 - Prakab	Z2-O	93 minutes no failure / interruption
	S23	cable (N)HXCH FE180 E30 4x1,5 RE/1,5 - Prakab	Z2-O	88 minutes
	S24	cable (N)HXCH FE180 E30 4x1,5 RE/1,5 - Prakab	Z2-O	93 minutes no failure / interruption
	S25	cable (N)HXH FE180 E30 4x50 RM - Prakab	Z2-P	86 minutes
	S26	cable (N)HXH FE180 E30 4x50 RM - Prakab	Z2-P	93 minutes no failure / interruption
	S27	cable (N)HXH FE180 E30 4x1,5 RE - Prakab	Z2-P	93 minutes no failure / interruption
	S28	cable (N)HXH FE180 E30 4x1,5 RE - Prakab	Z2-P	93 minutes no failure / interruption
	S29	cable (N)HXCH FE180 E90 4x50 RM/25 - Prakab	Z2-Q	73 minutes
	S30	cable (N)HXCH FE180 E90 4x50 RM/25 - Prakab	Z2-Q	93 minutes
	S31	cable (N)HXCH FE180 E90 4x1,5 RE/1,5 - Prakab	Z2-Q	83 minutes
	S32	cable (N)HXCH FE180 E90 4x1,5 RE/1,5 - Prakab	Z2-Q	93 minutes no failure / interruption
	S52	cable JE-H(St)H E30 2x2x0,8 – Prysmian	X2-J	93 minutes no failure / interruption
	S53	cable JE-H(St)H E30 2x2x0,8 - Prysmian	X2-K	65 minutes
	S54	cable JE-H(St)H FE180 E90 2x2x0,8 – Prakab	Y2-N	66 minutes
	S55	cable JE-H(St)H FE180 E90 2x2x0,8 - Prakab	Z2-Q	56 minutes

[1] The fire test was discontinued in 94<sup>th</sup> minute at the request of test sponsor.

Specimens S1 – S32 were tested by three-phase voltage supply 3 x 230/400V with bulbs 240V / 60 W. Specimens S52 – S55 were tested by one-phase voltage supply 1 x 110V with LED diodes 3V /0,03W. Circuit breakers with rating 3 A and performance characteristics B(gL) were used.



#### 4. CLASSIFICATION AND FIELD OF APPLICATION

##### 4.1 CLASSIFICATION ACCORDING TO ČSN 73 0895

The element, cable bearing system VERGOKAN – cable trays with accessories (consoles, brackets, screws etc.) with power and communication halogen free cables PRYSMIAN and PRAKAB with circuit integrity maintenance in fire is classified according to the following combinations of performance parameters and classes as appropriate.

Cables PRYSMIAN used by the test are classified as follows:

Cable	Type of tested cable, single cross-sections and number of conductors	Arrangement	Classification for type of tested cable (by cross-sections and number of conductors)	Classification for cable
(N)HXH E30	(N)HXH-J E30 4x1,5 RE	In cable trays KBSI60.400.100. Ceiling consoles HDHSMU50.1000 wits brackets HDWKM400. Loading 20 kg.m <sup>-1</sup> . Consoles in spacing of 1500 mm. Non-standard track X2-J.	P30-R	n x ≥ 1,5 mm <sup>2</sup> n ≥ 2 P30-R
	(N)HXH-J E30 4x50 RM		P90-R	
JE-H(St)H E30	JE-H(St)H E30 2x2x0,8	Non-standard track X2-J and X2-K.	P60-R	n x 2 x ≥ 0,8 mm P60-R
(N)HXCH E30	(N)HXCH E30 4x1,5 RE/1,5	In cable trays KBSI60.400.100. Ceiling consoles HDHSMU50.1000 wits brackets HDWKM400. Loading 20 kg.m <sup>-1</sup> . Consoles in spacing of 1500 mm. Non-standard track X2-K.	P30-R	n x ≥ 1,5/1,5 mm <sup>2</sup> n ≥ 2 P30-R
	(N)HXCH E30 4x50 RM/25		P60-R	
(N)HXHX E90	(N)HXHX-J E90 4x1,5 RE	In cable trays KBSI60.400.100. Ceiling consoles HDHSMU50.1000 wits brackets HDWKM400. Loading 20 kg.m <sup>-1</sup> . Consoles in spacing of 1500 mm. Non-standard track X2-L.	P90-R	n x ≥ 1,5 mm <sup>2</sup> n ≥ 2 P90-R
	(N)HXHX-J E90 4x50 RM		P90-R	
(N)HXCHX E90	(N)HXCHX E90 4x2,5 RE/2,5	In cable trays KBSI60.400.100. Ceiling consoles HDHSMU50.1000 wits brackets HDWKM400. Loading 20 kg.m <sup>-1</sup> . Consoles in spacing of 1500 mm. Non-standard track Y2-M.	P90-R	n x ≥ 2,5/2,5 mm <sup>2</sup> n ≥ 2 P90-R
	(N)HXCHX E90 4x50 RM/25		P90-R	



Cables PRAKAB used by the test are classified as follows:

Cable	Type of tested cable, single cross-sections and number of conductors	Arrangement	Classification for type of tested cable (by cross-sections and number of conductors)	Classification for cable
(N)HXH FE180 E90	(N)HXH FE180 E90 4x1,5 RE	In cable trays KBSI60.400.100. Ceiling consoles HDHSMU50.1000 wits brackets HDWKM400. Loading 20 kg.m <sup>-1</sup> . Consoles in spacing of 1500 mm. Non-standard track Y2-N.	P90-R	n x ≥ 1,5 mm <sup>2</sup> n ≥ 2 P60-R
	(N)HXH FE180 E90 4x50 RM		P60-R	
JE-H(St)H FE180 E90	JE-H(St)H FE180 E90 2x2x0,8	Non-standard track Y2-N and Z2-Q.	P30-R	n x 2 x ≥ 0,8 mm n ≥ 2 P 30-R
(N)HXCH FE180 E30	(N)HXCH FE180 E30 4x1,5 RE/1,5	In cable trays KBSI60.400.100. Ceiling consoles HDHSMU50.1000 wits brackets HDWKM400. Loading 20 kg.m <sup>-1</sup> . Consoles in spacing of 1500 mm. Non-standard track Z2-O.	P60-R	n x ≥ 1,5/1,5 mm <sup>2</sup> n ≥ 2 P60-R
	(N)HXCH FE180 E30 4x50 RM/25		P60-R	
(N)HXH FE180 E30	(N)HXH FE180 E30 4x1,5 RE	In cable trays KBSI60.400.100. Ceiling consoles HDHSMU50.1000 wits brackets HDWKM400. Loading 20 kg.m <sup>-1</sup> . Consoles in spacing of 1500 mm. Non-standard track Z2-P.	P90-R	n x ≥ 1,5 mm <sup>2</sup> n ≥ 2 P60-R
	(N)HXH FE180 E30 4x50 RM		P60-R	
(N)HXCH FE180 E90	(N)HXCH FE180 E90 4x1,5 RE/1,5	In cable trays KBSI60.400.100. Ceiling consoles HDHSMU50.1000 wits brackets HDWKM400. Loading 20 kg.m <sup>-1</sup> . Consoles in spacing of 1500 mm. Non-standard track Y2-M.	P60-R	n x ≥ 1,5/1,5 mm <sup>2</sup> n ≥ 2 P60-R
	(N)HXCH FE180 E90 4x50 RM/25		P60-R	

The element, cable bearing system VERGOKAN – cable trays with accessories (consoles, brackets, screws etc.) with power and communication halogen free cables PRYSMIAN and PRAKAB with circuit integrity maintenance in fire are classified to classes according to achieved test results of tested cables at tracks. Other classification is not allowed.

#### 4.2 FIELD OF APPLICATION

This classification is valid for the following end use applications:

##### General

- test results are applicable only for tested bearing systems VERGOKAN with cables PRYSMIAN and PRAKAB;
- cable track functionality shall not be affected negatively by adjacent building or technological elements, another cable tracks, piping tracks or other technological device;
- test results are applicable only in case the cable track in practice will be fixed to a building construction which is sufficient in term of its statics performance for period of functionality in fire, i. e. the element meets the loadbearing criterion R according to EN 13501-2+A1;
- if the cable track is fixed directly to a building construction element made of material such as concrete, bricks, aerated concrete or steel supporting structure, such anchoring components shall be used, which, in term of their properties, are suitable with respect to used material, used installation method, required thermal attack curve, required period of functionality in fire, mechanical actions caused by cable support construction with cables;
- the cable track can be fixed for example by means of bolted joints, riveted joints, welded joints, joints of direct assembling (inserting). Suitability of fixing type for the purpose shall be demonstrated by a test or statics calculation;



- the number of cables placed on the cable support construction in horizontal arrangement is limited just by area disposition, but the maximal load acting on the cable support construction, stated by manufacturer, shall not be exceeded. Manufacturer specification of the number of cables, if available, shall also be respected;
- if cables run freely they need not be fixed by clips when they are arranged horizontally on trays or ladders;
- on their whole length the cables shall be installed in such a manner, that the minimal bend radius stated by manufacturer is observed;
- also cables without functionality in fire may be placed on cable system together with cables with functionality in fire but only under the condition, that minimum distance of 200 mm is observed between them or they are separated by means of suitable fire screen. In addition the common cable management is possible only in case when each power cable or conductor is insulated to maximal voltage used in power management system;
- communication, data and signal cables shall be placed in such a way, that at all events a distance minimum of 100 mm is provided between those cables and power cables;
- when the cable routes are installed in sloped or vertical position following shall be met: in points where it turns from horizontal to other orientation the cable route shall be effectively attached and in orientation other than horizontal the cables shall be fixed firmly also in places of bending whereas the allowable support position maximal distances and the allowable minimal bend radius are retained;
- cables with vertical orientation shall be installed individually into clips arranged with spacing maximum of 300 mm; to reduce the longitudinal tension they have to be effectively attached after each 3500 mm length;
- cable tracks installed in arrangement with the angle between the horizontal plane and their longitudinal axis is less than 20° are considered as horizontal;
- suitable methods for the longitudinal tension reduction are as follows: the standard clips of cables are protected from direct thermal attack by means of a fire casing or the meander dilatation arrangement or the sealing in floor apertures;

### **Cables and cable support systems**

- test results are applicable to tested cable route, it means to combination of type, cross-section and manufacturer of the cable and of type and manufacturer of the cable support system;  
Test results for power cables are directly applicable as follows:
- where test specimens according to ČSN 73 0895 are used, the worst test result obtained from testing of these specimens applies to all dimensions and tested arrangement method of tested cable;
- if cables with maximal cross-section of the core less than 50 mm<sup>2</sup> are tested, the worst test result applies to all cross-sections of cables in range of tested cross-sections;
- test result obtained from testing of cables with five or four conductors applies also to cables of the same type with smaller or greater number of conductors;
- in case only cables with minimal or maximal tested cross-section passed successfully the test, the test result is applicable only to the same type of cable, section and arrangement method as tested;  
Test results obtained from testing of communication or signal cables are directly applicable as follows:
- test results are applicable to all constructions of specified type with diameter (cross-section) and number of cores equal to or greater than that of test specimen;  
Test results obtained from testing of metallic data cables are directly applicable as follows:
- test results from perimeter integrity test apply for tested arrangement method for all dimensions of specified type with diameter (cross-section) and number of cores equal to or greater than that of test specimen;  
Test results for cable supports systems are directly applicable as follows:
- in case the cables are attached into cable clips it is allowed to apply test results also to arrangement of more than one cable into one clip but maximum of 3. For arrangement of more than 3 cables into one clip it is necessary to demonstrate the functionality of the assembly by a separate test;
- test results obtained from testing of cables attached under the floor using clips are applicable also for attachment by means of cable clips to a wall horizontally;
- test results obtained from testing of installation on cable trays or cable ladders suspended on floor suspension devices are allowed to be applied to support constructions attached to a wall;
- In case the test was carried out with cable tray or ladder with jointing point placed in the middle between support constructions ( $\pm 5$  % of their distance) the test results apply to any position of jointing point between support constructions;





- Test results from test with specimen of cable trays or ladders are applicable also to event when the surface is treated with a colour painting or spraying in layer of surface density <math>< 1,0 \text{ kg/m}^2</math> or of thickness <math>< 1,0 \text{ mm}</math> in accordance with EN 13501-1+A1. When the thickness or surface density of this layer is of greater value it is necessary to carry out a test according to this standard;
- When test specimens of support constructions made in conformity with EN 61537 ed. 2 form steel with surface treatment are used, the test results are directly applicable to support constructions of the same type made of stainless steel but not vice versa;  
Test results for standard cable support constructions are directly applicable as follows:
- test results from tests of functionality of cables arranged on standard cable support construction by one manufacturer are applicable to tested standard cable support constructions made by another manufacturer. The applicability of test results between constructions which differ from standard constructions in any parameter is not possible;
- in case the test is carried out on nonstandard cable support construction differing from standard support construction just in one parameter, it is possible to apply the test results also to standard cable support construction provided the different parameter within its range covers also parameter of standard cable support construction (e. g. nonstandard cable support construction with attachment spacing greater than that of standard support construction);  
For non-standard cable support constructions the test results are directly applicable as follows:
- results from tests carried out on cable trays and cable ladders are applicable to all cable trays and cable ladders of identical construction of smaller width than tested.
- direct application of test results from test on a test specimen is not possible to different design nor to any other product made by another manufacturer;  
Direct application for vertical arrangement:
- for cables arranged vertically or with a slope test results obtained from cables arranged individually in cable clips under the floor apply;
- test results carried out on horizontally arranged cable support constructions apply also to vertical or sloped arrangements provided the conditions given in this application;
- **test result is applicable to welded head plate to steel U-shaped ceiling profiles;**
- **heavy joined steel brackets WKM... shall be fixed to steel U-shaped ceiling profiles HSMU from one or from two sides, providing the maximum loading of U-shaped ceiling profiles is not more than during the fire test and only if sufficient type of fixation of the head plates to ceiling is provided;**
- **use the new type of spacer TSU50 instead of spacer HDTSU50;**
- **change the construction of tested console (base of console) type HDHSMU in accordance with drawings in annex.**

## 5. LIMITATIONS

Load-bearing construction elements for fixing of cable systems must be proved for at least the same fire resistance compare to classified function in fire of cable system.

The construction contractor is solely responsible for proper preparation.

This classification document does not represent type approval or certification of the product.

The classification is valid until 14. 06. 2021 provided that the product, field of application and standards and regulations are not changed.

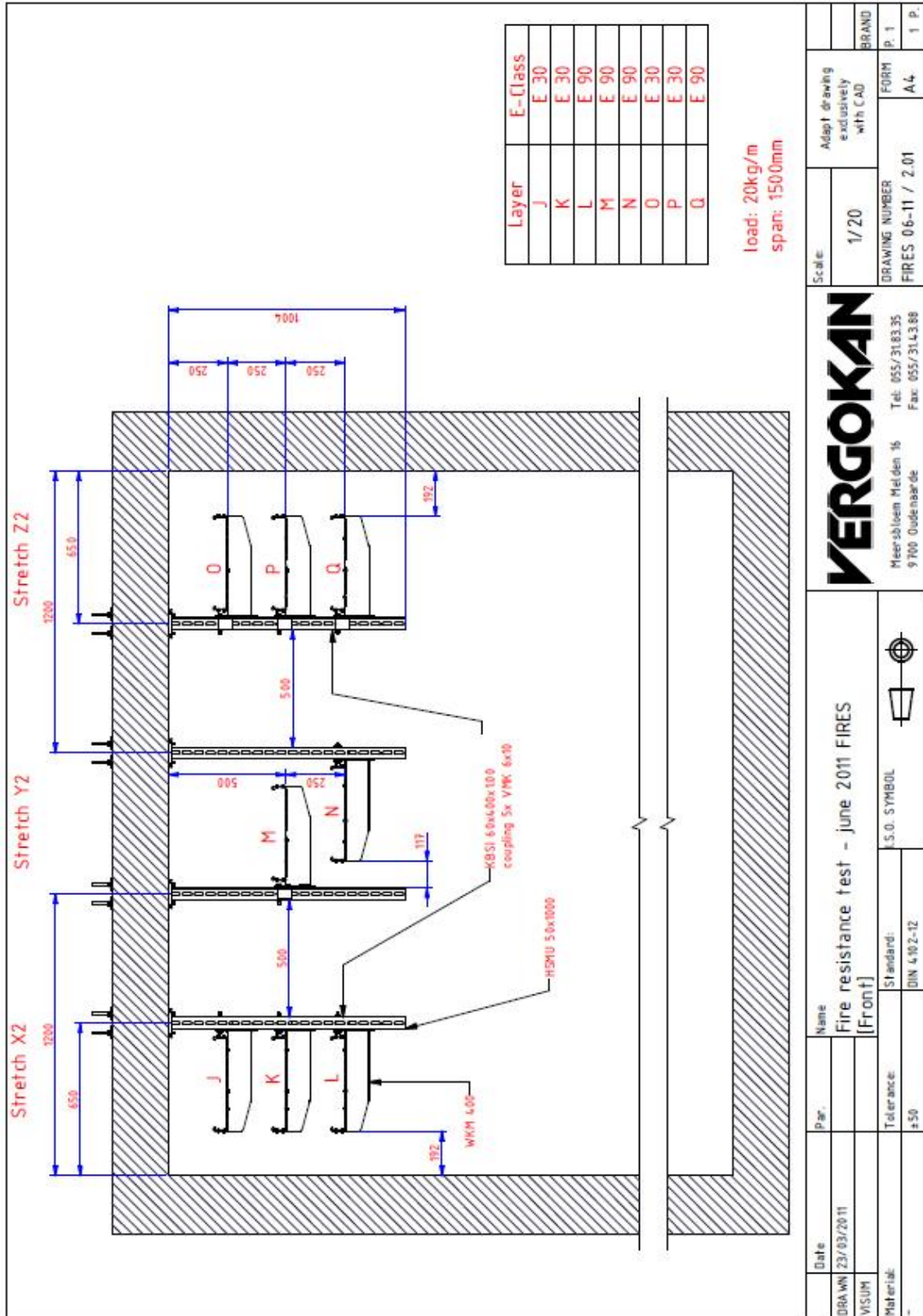
Approved:

Ing. Štefan Rástocký  
leader of the testing laboratory



Signed:

Miroslav Hudák  
technician of the testing laboratory





load: 20kg/m  
span: 1,5m  
no of layers: max. 3

5 VMK 6x10 in the coupling

Trays are fixated with 2 VMK 6x10 on each bracket.

no	qty	drawing	description
9	3	L4001	Cable tray with interlocking ends
8	11	VMK 6x10	Teethed round head bolt/rod
7	3	B 10x60 (DIN 933)	Bolt
6	3	TSU PROT0_01	Spacer
5	1	HSMU PROT0_03	Ceiling profile U-shaped
4	2	-	Fire resistant plug
3	6	CR0 10 (DIN 902 9)	Flat gasket washer
2	5	M 10 (DIN 934)	Nut
1	3	L5547	Heavy joined bracket
no	qty	drawing	description

**VERGOKAN**

Meersbloem Meiden 16  
9700 Oudenaarde  
Tel: 055/31.83.35  
Fax: 055/31.43.88

Scale: 1/10  
DRAWING NUMBER: FIRES 06-11  
FORM P. 1  
A4  
1 P.

Date: 23/03/2011  
DRAWN: VISUM  
Material: -  
Par.: +50  
Tolerance: -  
Standard: S.S.O. SYMBOL  
DIN 4102-12

Name: Fire resistance - june 2011 FIRES  
Without threaded rod, with KBSI 60x---x1.00



Type	Binnenmaat breedte :	Maat B	MD 0.8	MD 1.0	MD 1.25
KBSI 60*75	73	74.6	75	75.5	
KBSI 60*100	98	99.6	100	100.5	
KBSI 60*150	148	149.6	150	150.5	
KBSI 60*200	198	199.6	200	200.5	
KBSI 60*250	248	249.6	250	250.5	
KBSI 60*300	298	299.6	300	300.5	
KBSI 60*350	348	349.6	350	350.5	
KBSI 60*400	398	399.6	400	400.5	
KBSI 60*500	498	499.6	500	500.5	
KBSI 60*600	598	599.6	600	600.5	

Material dikte : 0.8/1/1.25

**NOT FOR PRODUCTION**

1	A	ontwerp: afschermingsplan (NF-88) voorbus (00-25/05/2016)	05/05/2016	—	—
aanpak	nr.:	ontwerp: 00-19100	in:	GET.	VEUM
			Schaal : 1/4 PLANNUMMER : 44.001 / 4 / — FORM : GS/MS k : 12 p : 12 p.		
Naam: Kabelbaan ineenschuurbaar [KBSI 60*---*---*---*---*---*---]			U.S.A. SYMBOOL:		
Naam:	Datum:	Par.:	Naam: — Toleranties: —		
GET.:	03-01-16	<img alt="signature" />			
VEUM:	—	—			
Automaat:	1.0037 (standaard)				



1	A	Scherptekening afwerkingspatroon (NF 484) (aantal: 60 25/05/2016)	25/05/2016
Aantal	Mts.	Materiaal	GET.
		Tolerantie	REMARK

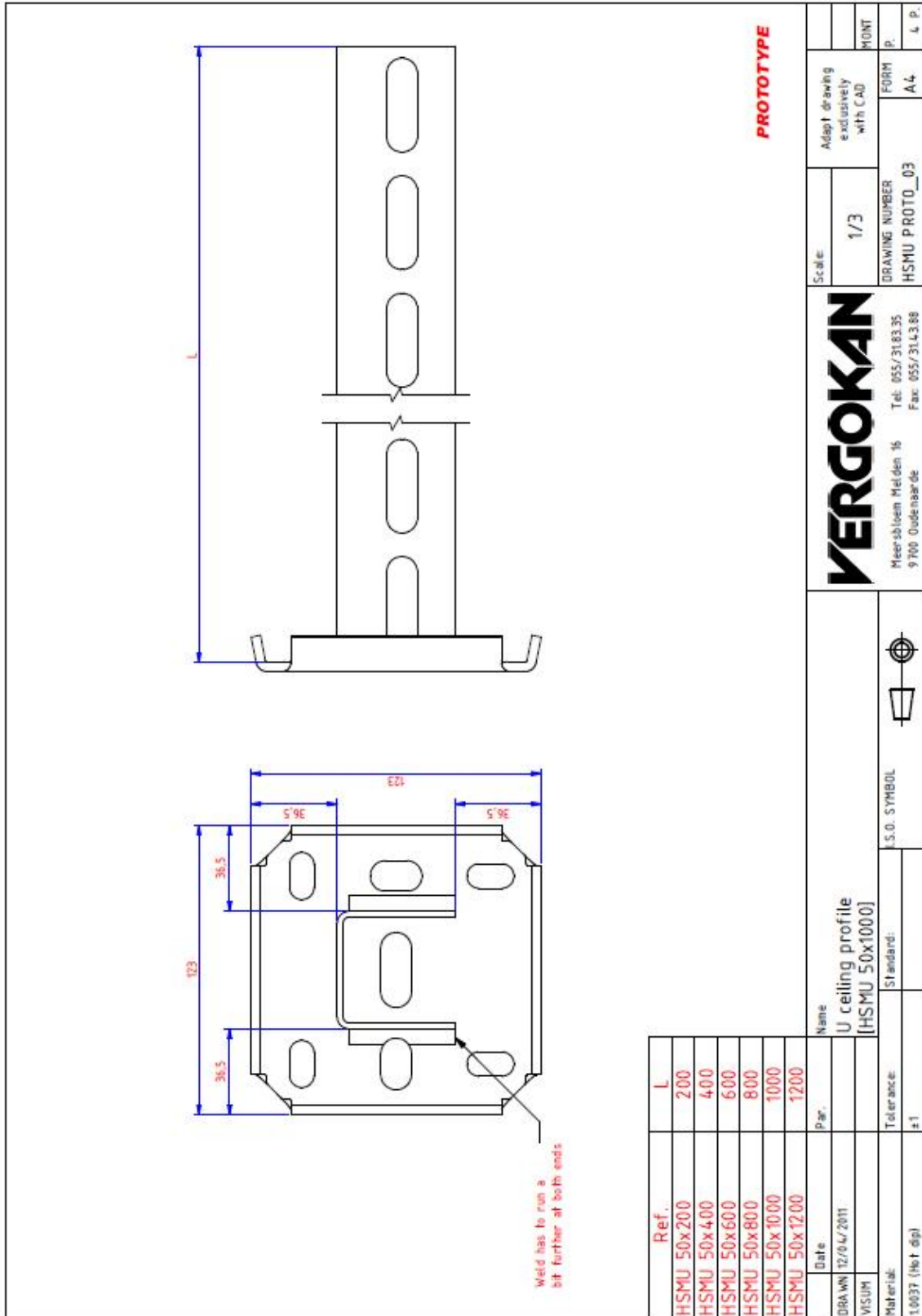
  

<p style="font-size: small;">Mergo-KAN Kabelbaan en Perforatiepatronen Tel: 055/244335 Fax: 055/244338</p>	<p>Schaal: 1/5</p> <p>PLANNUMMER: 44.001 / 4 / -</p>
--	--


  


<p>Naam: _____</p> <p>Get. van: _____</p> <p>Autonoom: L.0037, Sinterlab, L.P.</p>	<p>Benaming: Kabelbaan ineenschuurbaar Perforatiepatronen</p> <p>Par.: &lt;del&gt;K&amp;C&lt;/del&gt;</p> <p>Datum: 02-01-08</p> <p>Tolerantie: 1:0,5</p>
--	---


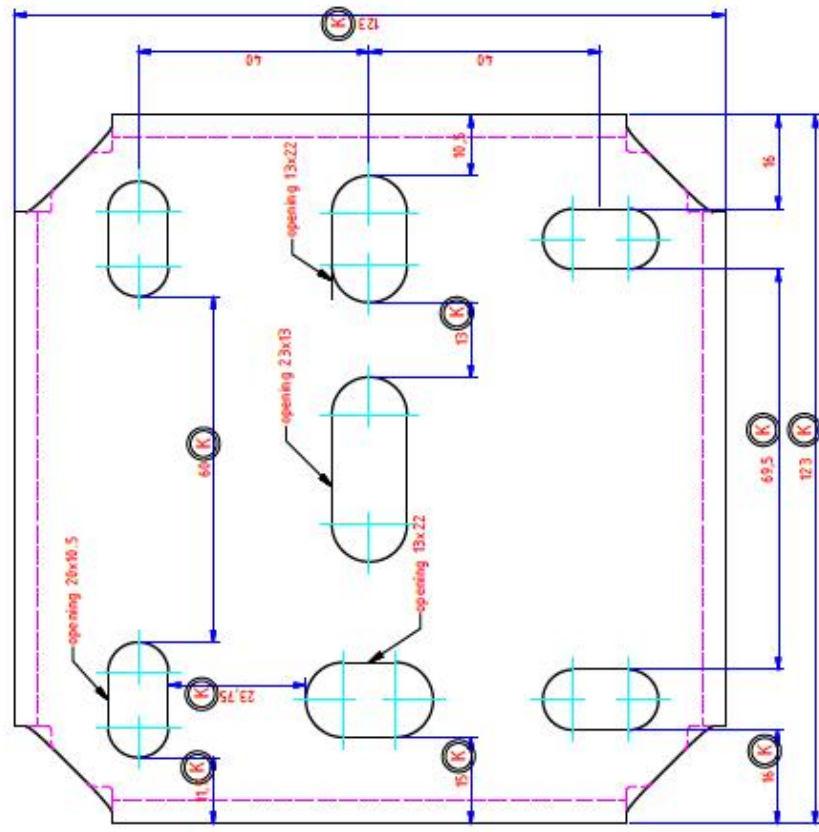
NOT FOR PRODUCTION





Datum		Benaming		Par.		Tolerantie:		Norm:		I.S.O. SYMBOL		Aantal		Editie		Omschrijving van de wijziging		Datum		Visum	
GE.T.		11/04/2005										1						Tekening enkel m.b.v. CAD aangepast		MONT	
MSUM																		Schaal: 1/1		FORM P. 1	
Materiaal:		1.0037 (Zwart)				±1												PLANNUMMER 4.4.02.7		A.4	
																		Meer sboem Melden 16 9700 Oudenaards		Tel: 055/31.83.35 Fax: 055/31.43.88	

**QUALITY APPROVED**  
 Materiaal dikte: 4mm ±10%





The drawing shows a technical drawing of a head plate with dimensions and a 3D perspective view. The technical drawing includes dimensions: overall width 135, overall height 80, hole diameter  $\varnothing 10.5$ , hole spacing 40, hole width 20, hole length 10.5, hole length 22, hole length 13, hole length 32, hole length 80, hole length 12.5, hole length 12.5, hole length 40, hole length 80, hole length 12.5, hole length 12.5, hole length 80, hole length 135. A 3D perspective view shows the plate with rounded corners and a thickness of 5.

**NOT FOR PRODUCTION**

1	A	Toevoegen van gaten d10 (zonder Wf)	13/06/2014	SC	By
Number		Edition		Description of the modification	
				Date	
				Adapt drawing exclusively with CAD	
				FORM	
				P.2	
				A.4	
				2 P.	

**VERGOKAN**

Meersbloem Melden 16  
9700 Oudenaarde

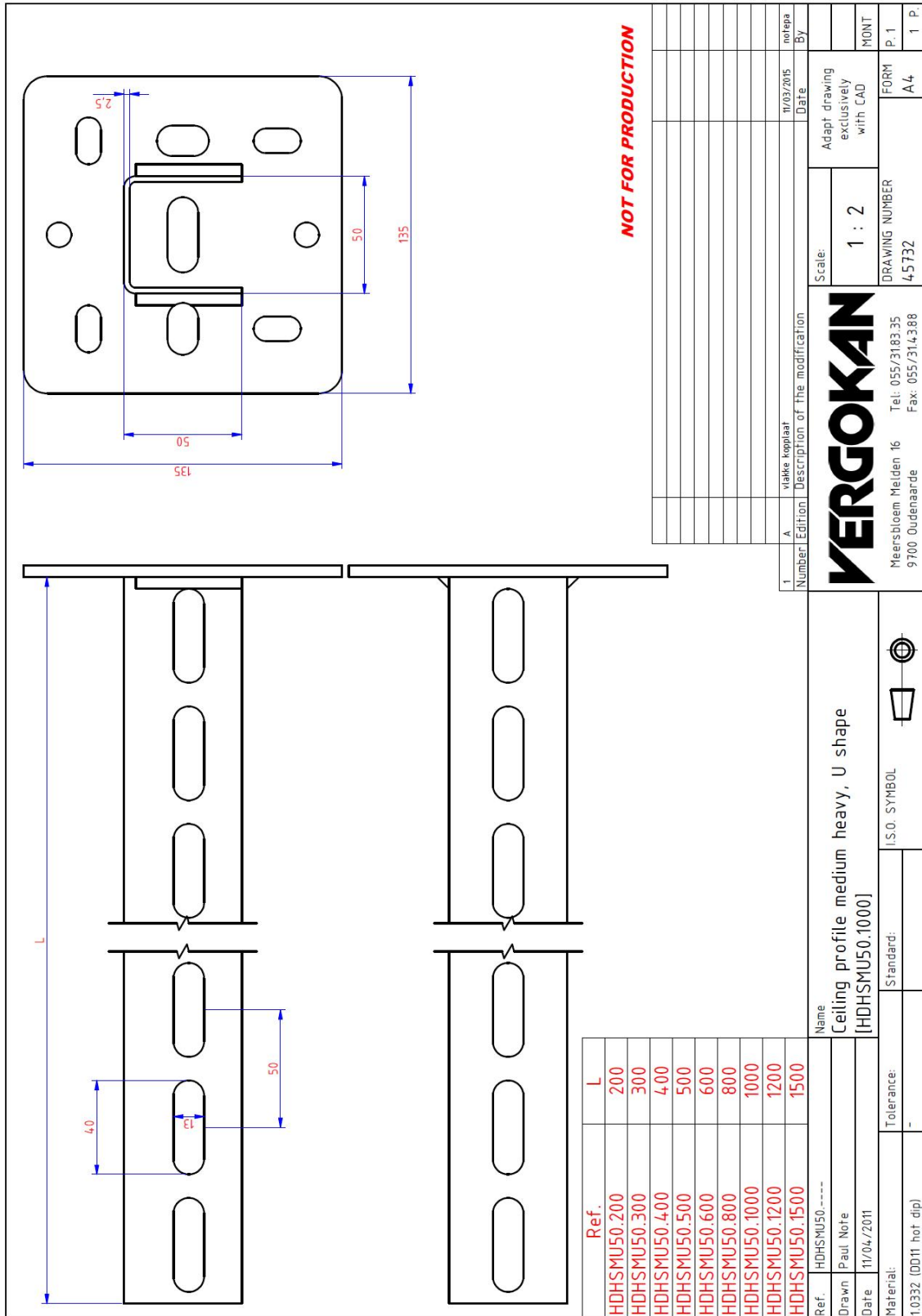
Tel: 055/3183.35  
Fax: 055/314.388

Scale: 1 : 2

DRAWING NUMBER: 46059

Ref.	0KPHSLE3	Name	Head plate type HSLE3:---		
Drawn	colpaest		[0KPHSLE3]		
Date	18/03/2014				
Material:	1.0332 (0D11 untreated)	Tolerance:	-	I.S.O. SYMBOL	
		Standard:			

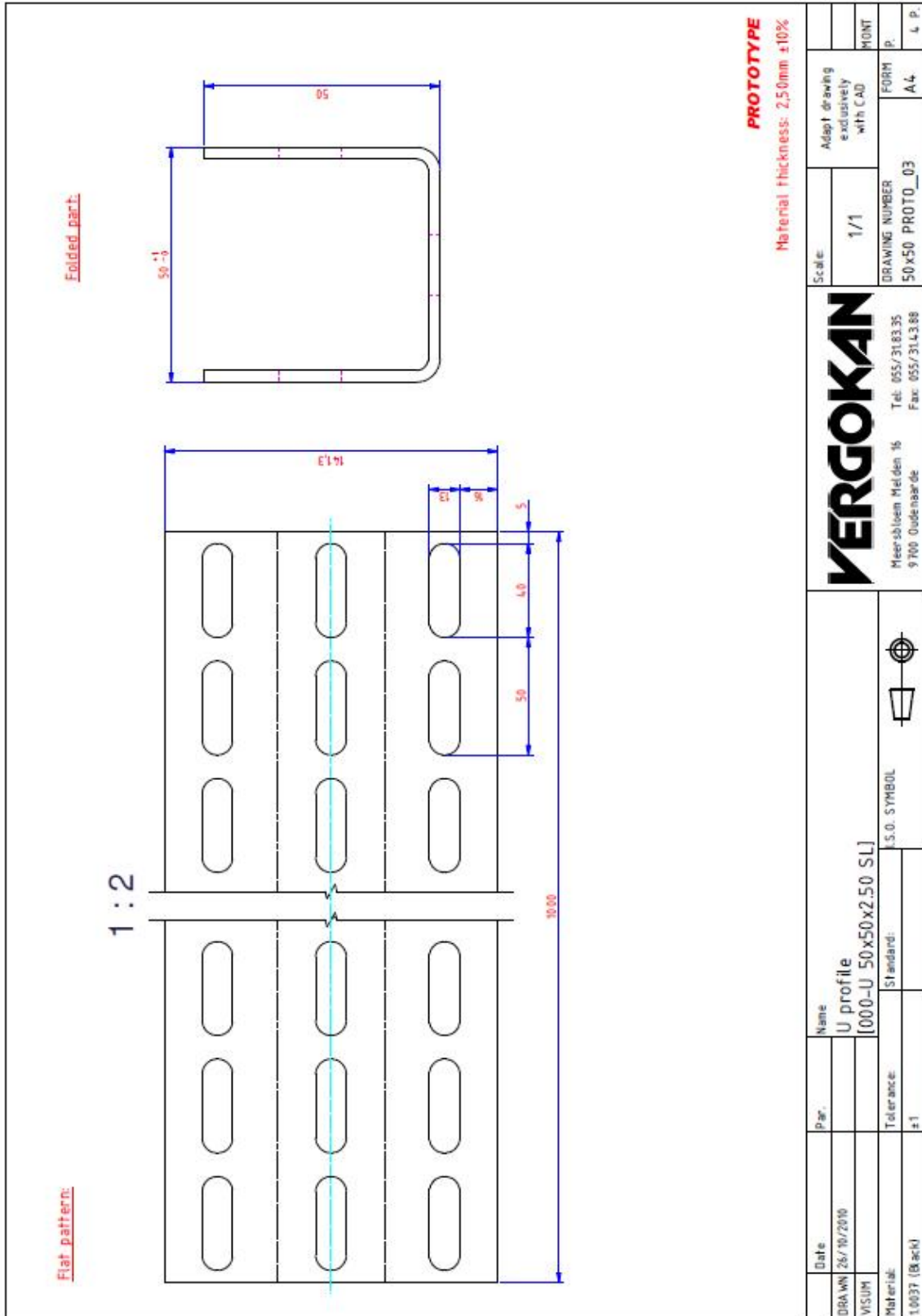




**NOT FOR PRODUCTION**

1	A	vlakke kopplaat	Description of the modification	11/03/2015	notepa	By
Number		Edition		Date		
Name			Scale: 1 : 2			
Ceiling profile medium heavy, U shape			Adapt drawing exclusively with CAD			
[HDHSMU50.1000]			FORM P.1			
Standard: I.S.O. SYMBOL			DRAWING NUMBER 45732			
Tolerance: -			A4			
Material: 1.0332 (DD11 hot dip)			1 P.			
Drawn Paul Note			Meersbloem Meiden 16 Tel: 055/3183.35			
Date 11/04./2011			9700 Oudenaarde Fax: 055/314.388			







1	1	45729	[2TSU50]	TSU verzinkt
2	1	B 10x80 (DIN 933)	[HDB10.80]	HD Zeskantbout
3	2	CRO 10 (DIN 9021)	[HDCRO.10]	HD Carosserierondsel
4	1	M 10 (DIN 934)	[HDM10]	Zeskantmoer M10 (HD)
item	qty	drawing	reference	description

Parts list

**NOT FOR PRODUCTION**

Ref. HOTSU--	Name	Scale:	Date	By
Drawn Paul Note	Spacer HDHSMU 50	1 : 1	Adapt drawing exclusively with CAD	
Date 15/06/2011	[HDTSU50]	DRAWING NUMBER	FORM	MONT
Material: 1.0037 (Hot-dip)	Standard:	45730	A4	P.
	Tolerance: -			3 P.
	I.S.O. SYMBOL			

Meersbloem Meiden 16  
9700 Oudenaarde

Tel: 055/3183.35  
Fax: 055/314388

Number: Edition: Description of the modification: Date: By:



1	M10x80 (DIN 933)	[B10.80]	Zeskantbout
2	M10 (DIN 9021)	[CRO10]	Carrossierondsel
3	M10 (DIN 934)	[M10]	Zeskantmoer
4	4.5728	[TTSU50]	Spacer, HSMU 50
item	drawing	reference	description
qty			

Parts list	

NOT FOR PRODUCTION

1	A	Herontwerp naar aanleiding brandtesten 2015 (zie WF HDHSMU50.000 - 27 10 2015)	27/02/2015
Number	Edition	Description of the modification	Date
			By

Ref.	TSU--	Name	Spacer HDHSMU 50
Drawn		Paul Note	[TTSU50]
Date	15/06/2011	Tolerance:	-
Material:	1.0226 (DX51 Pregalva)	Standard:	
		I.S.O. SYMBOL	

Scale:	1 : 2	Adapt drawing exclusively with CAD	
DRAWING NUMBER	45730	FORM	A4
Meersbloem Meiden 16 9700 Oudenaarde	Tel. 055/3183 35 Fax. 055/314388	MONT	P.
		3	P.



**WKM 100 and WKM 200**

**WKM 300 and WKM 400**

**PROTOTYPE**

Ref.	H	W
WKM 100	76,3	125
WKM 200	85,0	225
WKM 300	93,8	325
WKM 400	102,5	425

Date:	21/03/2011	Name:	Heavy joined bracket [WKM 400]
Material:	1.0037 (Het dip)	Standard:	S.O. SYMBOL
Tolerance:	±1		
DRAWN		Scale:	
MSUM		1/5	
Adapt drawing exclusively with CAD		MONT	
FORM P.		A4	
DRAWING NUMBER		WKM FIRES 05-2011	
PROTTO_05		14 P.	

Meersbloem Meiden 16  
9700 Oudenaarde  
Tel: 055/31.83.35  
Fax: 055/31.43.88



Ref.	Head plate	Thickness head plate	Bracket	Thickness bracket	H	W
000-WKM 100	000-KPWK 300	5,00mm ±10%	000-CWKM 100	2,50mm ±10%	76,3	125
000-WKM 200	000-KPWK 400	5,00mm ±10%	000-CWKM 200	2,50mm ±10%	85,0	225
000-WKM 300	000-KPWKZ 300	8,00mm ±10%	000-CWKM 300	2,50mm ±10%	93,8	325
000-WKM 400	000-KPWKZ 300	8,00mm ±10%	000-CWKM 400	2,50mm ±10%	102,5	425

000-CWKM 100

000-CWKM 200

000-CWKM 300

000-CWKM 400

PROTOTYPE

Date	Name	Number	Description of the modification	Date	Visum
DRAWN 21/03/2011	Heavy joined bracket [000-WKM 100]				
VISUM					
Material:	Tolerance:				
1.0037 (Zwart)	#1				

S.O. SYMBOL

**VERGOKAN**

Meersbloem Meiden 16  
9700 Oudenaarde

Tel: 055/31.83.35  
Fax: 055/31.43.88

Scale: 1/5

DRAWING NUMBER: WKM FIRES 05-2011

FORM P. A4

PROTO\_05